

# MEASURE G TASK FORCE

De Anza Campus Update Proposal





# Measure G Task Force



In response to campus concerns, the Task Force was created to develop criteria and recommendations for moving forward on the Measure G “megaproject” funding

## Students

- Isabel Caballero-Teixeira, FA-PAC, Biology
- Amy Huang, DASG, Business Management
- Isaac Tsang, DASG, Computer Science

## Classified Professionals

- Tina Lockwood, Furniture, Fixtures and Equipment Coordinator, College Operations
- Dennis Shannakian, Student Activities Coordinator, College Life
- Alyssa VanZandt, Laboratory Technician, Creative Arts

## Faculty Members

- Shagun Kaur, Instructor, Communication Studies
- Marco Marquez, Instructor, Graphic Design
- Hyon Chu Yi-Baker, Faculty Director, College Life

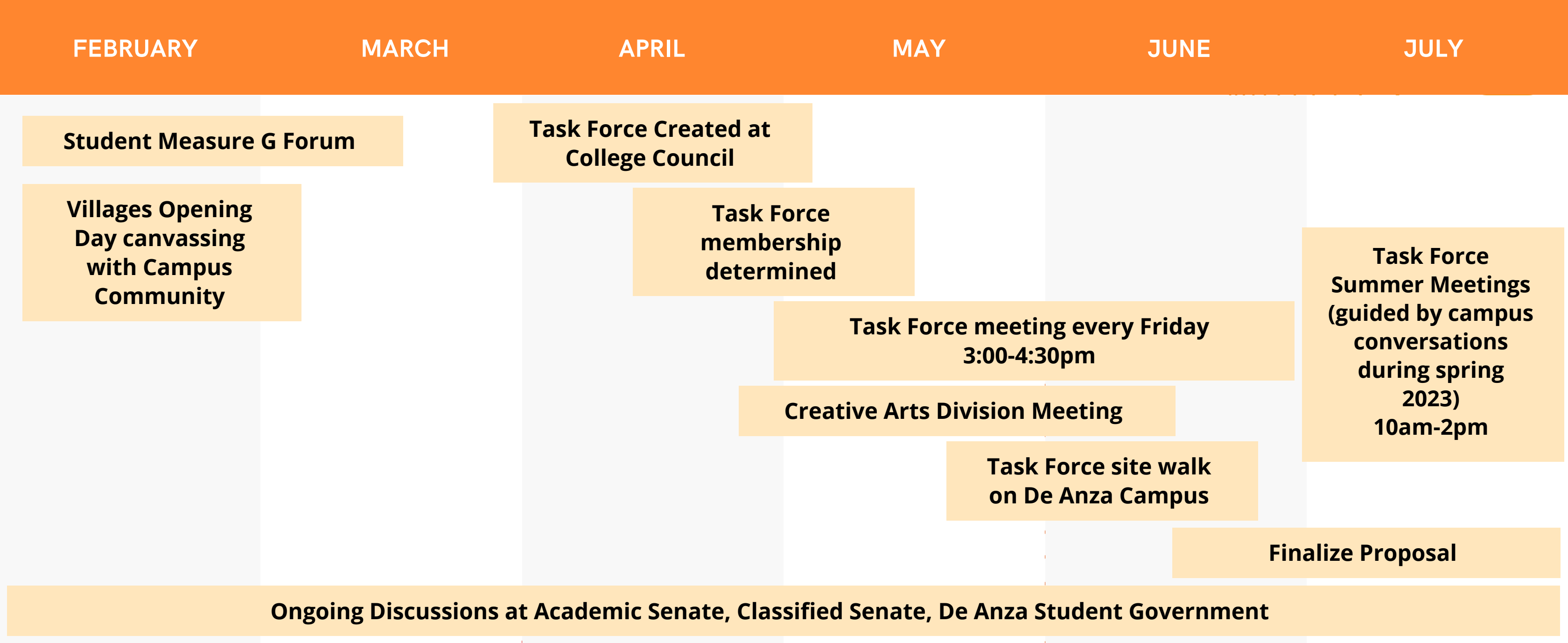
## Administrators

- Jennifer Mahato, Director, College Operations
- Michele LeBleu-Burns, Dean, Student Development and EOPS
- Daniel Smith, Dean, Creative Arts

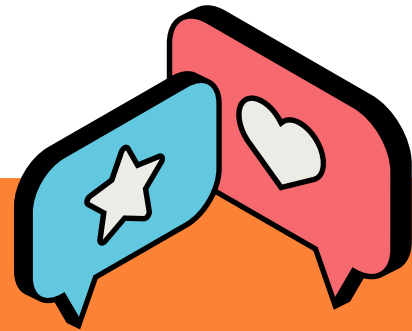
## Budget Information

- Pam Grey, Vice President, Administrative Services
- 

# Task Force in Action

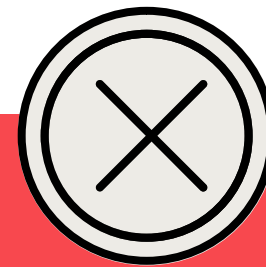


# Campus Feedback



**Campus Consensus across all groups is that a second theater is not desirable.**

[Findings supported by the feasibility study\\*](#)



**L-Quad displacement is strongly discouraged.**



**Strong desire for eliminating swing spaces that would adversely affect the campus as a whole.**

# Campus Interests



## Consolidation of Programs per the 2016 and 2021 facilities masterplans

- Services for Students building in A Quad footprint (approximately 31,000 square feet minimum)
- New Creative and performing Arts building/complex (approximately 50,000 square feet minimum for instructional needs) in Flint Center footprint.
- An instruction and campus community focused Events Center in the Flint Center footprint.\*

## \*Event Center: A large flexible multi-purpose space

- The campus recognizes a strong need for a large, flexible multi-purpose event center (capacity for 800-1,000 people) geared to instruction, student engagement, and campus events like De Anza Latinx Association (DALA) graduation, district opening day, etc.
- The event center may also be used as a community space when not utilized by the college.

# Reimagining Services for Students

## Dedicated and consolidated Services for Students Building

- A new building west of the existing Registration and Student Services Building, at the site of the current A Quad, would meet the facilities needs identified by Student Services Program Reviews over multiple years.
- Enable all dispersed services to move to a consolidated location at the front of the campus.
- Services will be accessible to first-time visitors such as potential students and parents and provide a positive campus experience.

## A Welcoming Gateway for Students and the Community

- Allow for better collaboration and efficiency between related services.
- Support student success and retention with ongoing collaboration and communication between programs to serve the students best.
- The two student services buildings and campus center will form a central, gathering hub serving as a communal space for student activities and engagement (Student Union).

# Implementation

Sequence construction to minimize the need for temporary swing space for A-Quad programs.

1. Construct the new Creative Arts and Events Center Building/Complex.
2. Move Creative Arts from A-Quad to the new building.
3. Demolish A-Quad and build the Services for Students Building.
4. After completion and occupancy of the Services for Students building, renovate vacated spaces focusing on student-centered flexible college event and meeting spaces (Campus Center, LCW, VPAC, etc.)
  - a. Includes reallocating and improving spaces within the Visual and Performing Arts Center (VPAC) to better support the performing arts.

1250 Stevens Creek Boulevard  
Sunnyvale, CA 95014



# Questions?

Additional resources at:



Measure G Task Force  
<https://www.deanza.edu/measure-g/task-force/>

